

GYEON[®]
quartz cloth

GYEON[®]
quartz cloth



GYEONQUARTZ.COM

GYEON IS A TRADEMARK OR REGISTERED TRADEMARK OF
GYEON TECHNOLOGY IN THE UNITED STATES AND OTHER COUNTRIES.
GYEON TECHNOLOGY / 1405-538, 212, GASAN DIGITAL 1-RO, BEJMCHEON-GU, SEOUL SOUTH KOREA,
SALES@GYEONQUARTZ.COM

**FUTURISTIC
CAR CARE**
AVAILABLE TODAY



[@GYEONQUARTZOFFICIAL](https://www.facebook.com/GYEONQUARTZOFFICIAL)



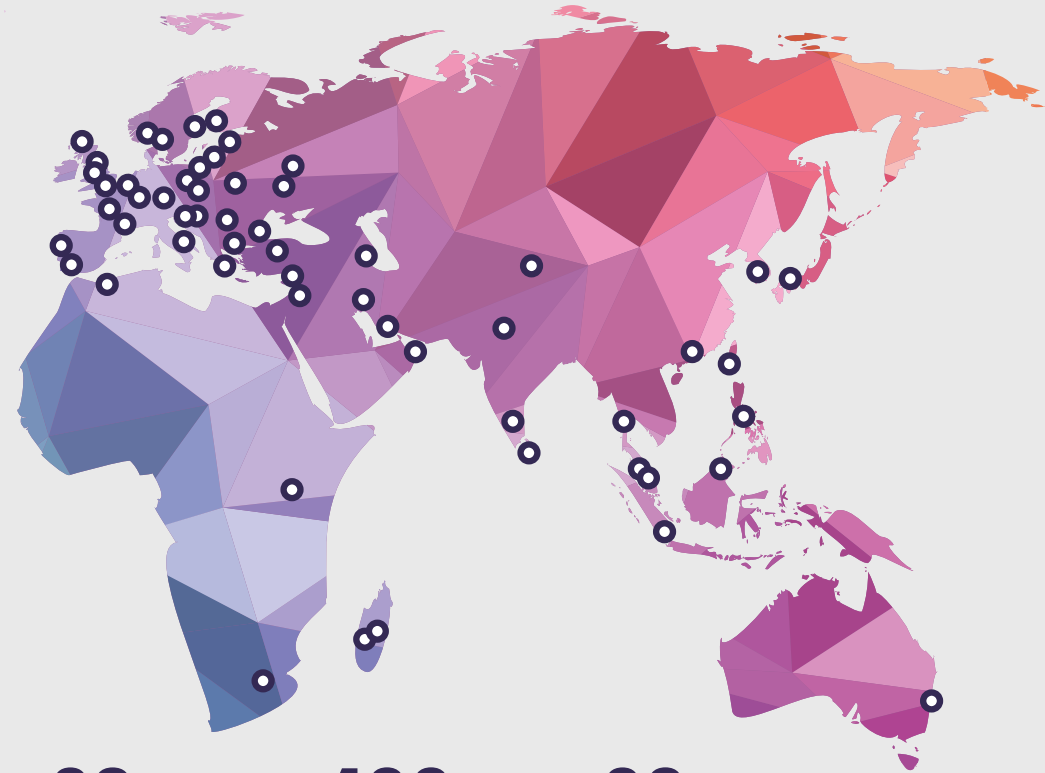
[GYEON_QUARTZ](https://www.instagram.com/GYEON_QUARTZ)

FIND OUT MORE ABOUT **GYEON**

Gyeon offers a range of premium quality products thoroughly tested to satisfy the needs of car detailing enthusiasts, as well as the exacting requirements of professionals. At Gyeon, we spare no effort or expense to provide you with the most innovative solutions, always producing exceptional results and ensuring your satisfaction.

OUR DEVELOPMENT

Since early years of the new millennium, we have believed that the car care world is missing a quality, technologically advanced and customer focused brand. Years of development, testing and searching for the best ingredients lead to the debut of Gyeon Quartz in 2012. The brand, located in a modern facility in the heart of South Korea, quickly established its position as the market leader in top notch ceramic coatings. Developing innovative maintenance products, Gyeon combined user friendly characteristics and state of the art packaging, setting new levels in the industry.



82
INNOVATIVE
PRODUCTS

400+
CERTIFIED
DETAILERS

80+
COUNTRIES

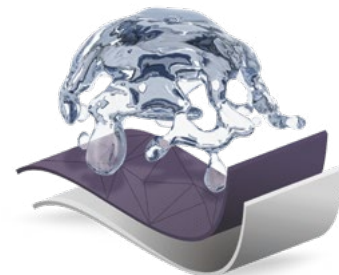


OUR ULTIMATE TECHNOLOGIES

Protection based on silicon dioxide (SiO_2) is the most sophisticated car protection technology developed to date.

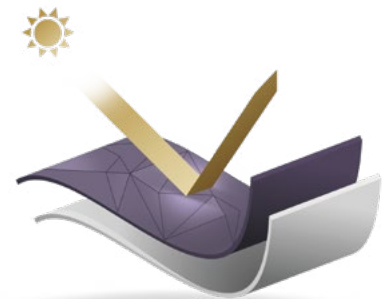
RESISTANCE

All protective coatings created by Gyeon are based on SiO_2 , which is a guarantee of exceptional resistance to chemicals with a pH of 2-11, UV rays, as well as to other harmful factors present on the roads and in the atmosphere.



DURABILITY

Gyeon is a standard-setter when it comes to the durability of protective coatings, offering both enthusiasts and professionals maximum performance, while Certified Detailers can benefit from a long term warranty for Q² DuraFlex, Q² Mohs+ and Q² DuraBead protection.



EFFECT

One of the primary reasons behind an auto detailing treatment are the splendid visual effects it results with. Gyeon combines exceptional durability with visual effects that often overshadow the performance of natural waxes.

GET TO KNOW ALL OUR PRODUCT COLLECTIONS

After many years of experience in detailing and vigorous research, we bring you our ultimate, quartz based solutions for your vehicle and business. Every single item in our range complies with our mission to deliver the very best in terms of quality, durability and ease of use. They are thoroughly tested by scientists in the laboratory and also by professional detailing businesses before they ever reach the market, to guarantee you proven results and indisputable quality.

Q² QUARTZ COATINGS

Q²M MAINTENANCE

Q²M ACCESSORIES

Q²R MARINE



Q² PRODUCT COLLECTION

TOP QUARTZ COATINGS



A superb complementary series of advanced quartz based products for outstanding detailing performance. The Q² range offers hi-tech coatings for both enthusiasts and detailing professionals.

PAINT COATINGS

Q² CANCOAT
Q² ONE
Q² MATTE
Q² PURE
Q² MOHS
Q² SYNCRO
Q² CANCOAT PRO
Q² DURABEAD
Q² MOHS+
Q² DURAFLEX

ALL SURFACE COATINGS

Q² TIRE
Q² BOOSTER
Q² VIEW
Q² TRIM
Q² RIM
Q² LEATHERSHIELD
Q² LEATHERCOAT
Q² FABRICCOAT
Q² ANTIFOG

LEVELS OF PAINT QUARTZ COATINGS



ENTHUSIAST

The easy way to enter the world of ceramic coatings. Fantastic ease of use, outstanding hydrophobicity and immense gloss!

Q² CANCOAT
Q² ONE

PROFESSIONAL

Superb durability, great resistance and an easy application for both advanced enthusiasts and detailing professionals.

Q² MATTE
Q² PURE
Q² MOHS
Q² SYNCRO

CERTIFIED DETAILER

Professional ceramic coating solutions provided exclusively by Gyeon Certified Detailers worldwide with protection warranties.

Q² CANCOAT PRO
Q² DURABEAD
Q² MOHS+
Q² DURAFLEX

ENTHUSIAST Q² CANCOAT

The easiest to apply quartz coating with outstanding hydrophobicity and gloss.

Simply spray onto the attached microfibre and wipe until you achieve full gloss. That is how easy it is to apply Q² CanCoat! This product provides an outstanding and durable SiO₂ based coating, which is easy to apply and durable at the same time.

—
BOX CONTAINS: Q² CANCOAT / 3 SPRAY HEADS / 1 MICROFIBRE
AVAILABLE CAPACITIES: 200 ML
PRODUCT PURPOSE: PAINT / TRIM / WHEELS / PPF



DURABLE

Q² CanCoat applied to your vehicle's paint provides you with a protective layer against UV rays, strong chemicals, bird droppings or road salt and prevents the paint against oxidation. Q² CanCoat will retain most of its hydrophobic and self-cleaning abilities for up to 6 months/10k km.



ENTHUSIAST Q² ONE

The enthusiasts choice for durable and resistant protection.

Q² One brings the benefits of all forms of protection together. As easy to apply as a natural wax, glossy like a real glaze, durable and resistant as regular coatings. This fast-curing formula requires no special equipment and transforms your garage into a detailing studio.

—
BOX CONTAINS: Q² ONE / Q²M CURE 100 ML
MANUAL / APPLICATOR / 4 SUEDE CLOTHS
AVAILABLE CAPACITIES: 30 ML / 50 ML / 100 ML
PRODUCT PURPOSE: PAINT



HYDROPHOBIC

With its superb beading, Q² One meets expectations of detailing enthusiasts. A high water contact angle of over 110° results in spectacular water behaviour and helps with regular maintenance.

PROFESSIONAL Q² MATTE

Enhances colour without changing the finish of your paintwork.

Unique quartz coating for matte paint. Q² Matte is very easy to apply - only one layer is required. It is extremely hydrophobic and designed for maximum durability on matte finish automotive paint. Prevents discolouration and oxidation, protects against strong chemicals, road salt and UV rays. Q² Matte might be used on matte and satin PPF and colour-change wraps.

BOX CONTAINS: Q² MATTE / Q²M CURE MATTE 100 ML
MANUAL / APPLICATOR / 4 SUEDE CLOTHS

AVAILABLE CAPACITIES: 50 ML
PRODUCT PURPOSE: PAINT, PPF



THE ULTIMATE SOLUTION FOR MATTE FINISHED CARS

Q² Matte is the most advanced quartz coating designed only for matte finished paintworks. As the formula has been created from scratch, it provides incredible durability in comparison with regular, versatile products.



PROFESSIONAL Q² PURE

Pure quartz protection - thick, hard and extremely hydrophobic.

Q² Pure brings the appearance of the paintwork to a new level, delivering pure candy gloss. Its thick formulation requires only one layer, making the application process quick and user friendly.

BOX CONTAINS: Q² PURE / Q²M CURE 100 ML
MANUAL / APPLICATOR / 4 SUEDE CLOTHS

AVAILABLE CAPACITIES: 30 ML / 50 ML / 100 ML
PRODUCT PURPOSE: PAINT



GLOSS AND DURABILITY

Q² Pure combines two crucial qualities of a great coating— a very high level of gloss and extreme durability. While offering durable and highly chemical resistant protection against all types of environmental impact, fantastic depth and pure candy gloss are the key strengths of the coating. Q² Pure surprises with its glass-like-gloss, being a worthy rival to quality natural waxes.





PROFESSIONAL Q² MOHS

Advanced, multilayer coating
for professionals and enthusiasts.

Durability is one of most salient merits of the product. It is able to maintain 80% of its original hydrophobic properties and to last on the paint for a period of at least 18 months, thus being a guarantor of optimum car protection against environmental factors and driving conditions. Compared to sealants, even the top performing ones, it lasts three times longer.



BOX CONTAINS: Q² MOHS / Q²M CURE 100 ML
MANUAL / APPLICATOR / 4 SUEDE CLOTHS

AVAILABLE CAPACITIES: 30 ML / 50 ML / 100 ML

PRODUCT PURPOSE: PAINT

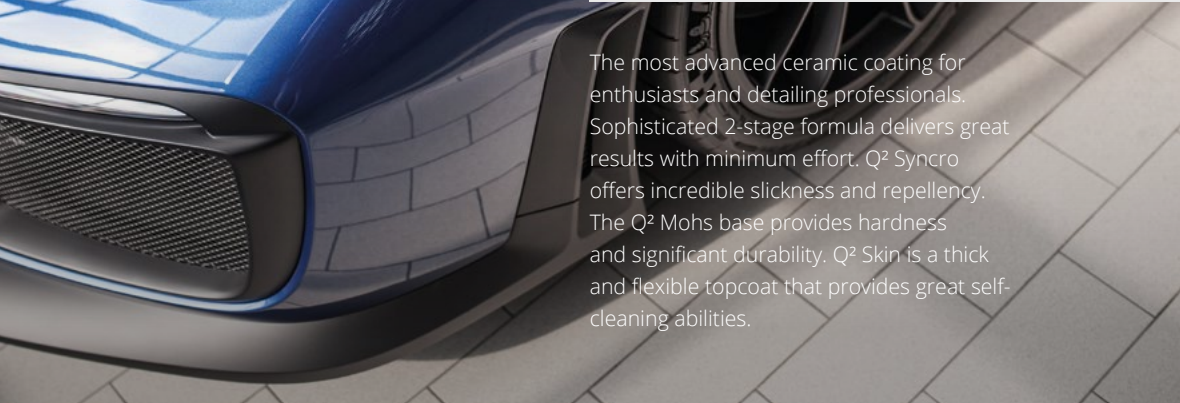
THE HARDEST COATING WIDELY AVAILABLE

Q² Mohs is the hardest automotive paint coating available to a wide range of users, which makes the paint extremely resistant to scratches. The extraordinary hardness and structural integrity of the coating preserves the effects achieved during the paint correction and is synonymous with much slower paint degradation during daily maintenance routine.





PROFESSIONAL
Q² SYNCRO
2-stage formula with fantastic hydrophobicity and great ease of use.



The most advanced ceramic coating for enthusiasts and detailing professionals. Sophisticated 2-stage formula delivers great results with minimum effort. Q² Syncro offers incredible slickness and repellency. The Q² Mohs base provides hardness and significant durability. Q² Skin is a thick and flexible topcoat that provides great self-cleaning abilities.

HARD AND SLICK

Q² Mohs is the hardest automotive paint coating available to a wide range of users. Extraordinary hardness of the coating preserves the effects achieved with paint correction. Combined with the extreme slickness of the Q² Skin topcoat, the Q² Syncro coating system provides immense benefits during daily maintenance routines, making regular care less frequent and easier.

BOX CONTAINS: Q² MOHS / Q² SKIN / Q²M CURE 100 ML
MANUAL / APPLICATOR / 8 SUEDE CLOTHS
AVAILABLE CAPACITIES: 50 ML & 30 ML / 100 ML & 50 ML
PRODUCT PURPOSE: PAINT



ADVANCED AND USER FRIENDLY

Q² Syncro is the most advanced widely available coating offered by Gyeon. Its aim is to offer professional coating experience to all customers outside the Certified Detailer Program. Its multilayer application ends with the application of Q² Skin, an advanced silicone based topcoat that provides exceptional slickness and unrivalled hydrophobicity. Despite the three-layered application, both base- and topcoat are user friendly and easy to apply.



BEING A GYEON CERTIFIED DETAILER

gives you an opportunity to work with advanced, professional ceramic coating systems like Q² DuraFlex, Q² Mohs+ or Q² DuraBead. All come with warranties, which is a huge obligation and responsibility with respect to our customers. Therefore, we seek the best and most professional companies in which we can entrust not only a great product but also the reputation of our company. We require continuous engagement and the 6 month probatory period allows us to establish your intentions in relation to our company.

Visit www.gyeonquartz.com/certified-detailer-program to become part of the network!



CERTIFIED DETAILER Q² CANCOAT PRO

The Gyeon Certified Detailer top coat and maintenance coating.

Gyeon certified detailer top coat/top-up coating. Perfect gloss & hydrophobicity booster for all professional line coatings. The easiest way to restore initial properties of Gyeon Certified Detailer coatings.

BOX CONTAINS: CANCOAT PRO 200ML / MICROFIBRE / 3 SPRAY HEADS

AVAILABLE CAPACITIES: 200 ML

PRODUCT PURPOSE: PAINT / TRIM / WHEELS / PPF



CERTIFIED DETAILER'S ULTIMATE MAINTENANCE TOOL

The improved Q² CanCoat Pro is a fantastic maintenance product for every annual or biannual maintenance service. Once full chemical decontamination has been performed, the simple wipe on-wipe off coating will provide further extension of the durability and hydrophobicity to one of our top of the range coatings.

CERTIFIED DETAILER

Q² DURABEAD

Advanced quartz technology combined with user friendly characteristics.

Q² DuraBead is an advanced, two-ingredient and multi-layer ceramic coating designed to suit the requirements of Gyeon Certified Detailers. Multiple layers of Q² Mohs as the base coat topped with an extremely hydrophobic, fluorine based top coat Q² Bead result in incomparable hydrophobicity, self-cleaning and great durability.

BOX CONTAINS: Q² MOHS 50 ML / Q² BEAD 30 ML
MANUAL / APPLICATOR / 8 SUEDE CLOTHS / WARRANTY

AVAILABLE CAPACITIES: 50 ML & 30 ML

PRODUCT PURPOSE: PAINT



MULTILAYER COATING

It is recommended to apply two layers of Q² Mohs (three layers are absolutely optimal) and then apply the Q² Bead coating over the top of these. This process will guarantee a super hydrophobic effect of water beading along with ultimate durability.



THE BREAKTHROUGH IN CERAMIC COATINGS

Q² BASE

The pure silazane Q² Base coating is the hardest automotive coating ever developed. It is a technological breakthrough as it requires only one layer.

FIND IT IN

CERTIFIED DETAILER SETS

Q² DURAFLEX & Q² MOHS+



CERTIFIED DETAILER

Q² MOHS+

A highly advanced professional ceramic coating set.

Q² Mohs+ is an unique 2-stage coating system that provides both extreme scratch resistance and self-cleaning properties. A pure silazane base coat is the hardest automotive coating ever developed. The topcoat prevents watermarks and stains, and prolongs the total durability of the Q² Base coating. The end result cannot be overestimated – by implementing safe maintenance procedures, paint correction may be avoided throughout the entire period of use.

BOX CONTAINS: Q² BASE / Q² PHOBIC / Q²M CURE 100 ML
MANUAL / APPLICATOR / 8 SUEDE CLOTHS / WARRANTY

AVAILABLE CAPACITIES: 50 ML & 30 ML / 100 ML & 50 ML

PRODUCT PURPOSE: PAINT



CERTIFIED-ONLY COATING SYSTEM

Q² Mohs+ set is one of the most superb forms of automotive paint protection available on the market. Designed for professionals only and used by Gyeon Certified Detailers, comes with the warranty of the highest level of protection, which refers to the outstanding properties throughout the full lifespan. The Q² Phobic top coat is a highly resistant quartz coating.

CERTIFIED DETAILER

Q² DURAFLEX

A highly advanced professional ceramic coating set.

Q² DuraFlex is an advanced, two-ingredient and double layer ceramic coating, designed to suit the requirements of Gyeon Certified Detailers. The pure silazane Q² Base coating is the hardest automotive coating ever developed. It is a technological breakthrough and requires only one layer. Q² Flexi is a thick and extremely slick topcoat that has set new standards in gloss, hydrophobicity and durable self-cleaning.

BOX CONTAINS: Q² BASE / Q² FLEXI / MANUAL / APPLICATOR / 8 SUEDE CLOTHS / WARRANTY

AVAILABLE CAPACITIES: 50 ML & 50 ML / 100 ML & 100 ML

PRODUCT PURPOSE: PAINT



SUPER SLICK TOPCOAT

The Q² Flexi topcoat is a silicone-based topcoat developed to work at its best with the Q² Base coating. It is extremely thick and glossy. Q² DuraFlex is the slickest of all Gyeon coatings and provides highly durable repellency with supreme self-cleaning abilities. It shares super hydrophobic properties with Q² DuraBead but creates a significantly different, candy-like look.

AWARD-WINNING FORMULAS

Gyeon formulas have been laboratory tested by the world's most respected institutes and are appreciated by extremely demanding professionals. Gyeon has received multiple consumer awards.



Q² TIRE

World's first SiO₂ based tire sealant.

Q² Tire is the only SiO₂ based tire coating. It guarantees not only durability, but splendid visual effects as well. The product might be layered or heated up in order to extend its durability even further. Even though the repellency might be gone with usage, the high darkening effect will remain.

—
AVAILABLE CAPACITIES: 400 ML
PRODUCT PURPOSE: WHEELS



RESTORES RUBBER

Q² Tire not only protects tires, it also improves their looks, making their wall seem factory fresh, with profoundly vivid colours. The visual effect lasts even after deterioration of the hydrophobicity.



Q² BOOSTER

Highly reactive fluorine top coat.

If you love extreme beading, Q² Booster is the best product on the market to achieve it. It generates extreme hydrophobicity, when paired with high quality quartz coatings, reaching a contact angle of up to 120°. Q² Booster is not a stand alone coating, but a top coat and needs to be applied shortly after the installation of a ceramic base coating.

BOX CONTAINS: Q² BOOSTER / APPLICATOR / 4 SUEDE CLOTHS
AVAILABLE CAPACITIES: 30 ML
PRODUCT PURPOSE: PAINT



A UNIVERSAL TOP COAT

Q² Booster is the easiest way to get the most out of your coating of choice. No matter whether it's Q² One, Q² Pure, Q² Mohs or something outside the Gyeon range, you can increase durability and hydrophobicity massively.



Q² VIEW

Durable and effective rain repellent.

There are many hydrophobic coatings available on the market, but their durability leaves a lot to be desired. Our product combines two of the most desired characteristics for this type of product. It remains on the most intensely used windscreen for up to 12 months, at the same time ensuring an undiminished water repellency.

BOX CONTAINS: Q² CLEANSE / Q² REPEL
2 APPLICATORS / 4 SUEDE CLOTHS / MANUAL
AVAILABLE CAPACITIES: 20 ML & 20 ML
PRODUCT PURPOSE: GLASS



SELF CLEANING

Q² View repels both water and dirt from the glass surface. In rainy or night conditions, it offers an invaluable assistance, as the driver will notice any obstacles or dangers much sooner.



Q² TRIM

Quality, quartz-based trim coating.

Q² Trim has a formula that allows it to be applied on different vehicle's parts: on plastics with their own structure, on unpainted parts, on so-called piano black finishes, which are most problematic to maintain, and on tail- and headlight covers after having them renovated. That unique quality is unlikely to be found in other available products.

BOX CONTAINS: Q² TRIM 30 ML / MANUAL / APPLICATOR / 4 SUEDE CLOTHS

AVAILABLE CAPACITIES: 30 ML

PRODUCT PURPOSE: TRIM



QUARTZ BASED

The major difference between Q² Trim and various other trim restoring products is its pure SiO₂ base. It does not leave an oily layer on the trim's surface, but strongly bonds with its structure, leaving a thick coat. Q² Trim provides a strong, long lasting restoration effect.



Q² RIM

A unique rim-only quartz coating.

There are various wheel rim types available on the market, e.g. wet painted, powder coated, anodized or polished. Q² Rim is an appropriate product to protect each and every one of them. Even the owners of models with polished rim lips have observed that the need to refresh the so-called mirror effect is significantly less frequent.

BOX CONTAINS: Q² RIM 30 ML / MANUAL / APPLICATOR / 4 SUEDE CLOTHS

AVAILABLE CAPACITIES: 30 ML

PRODUCT PURPOSE: WHEELS



TEMPERATURE RESISTANT

Wheels, just after the engine bay and exhausts, are the components most exposed to high temperatures. Q² Rim has an endurance capability exceeding 800°C without any damage to its original properties. The fact that this quartz coating is dedicated exclusively to rims is an asset and introduces a new level of quality within the field of rim protection.



Q² LEATHERSHIELD

Highly advanced ceramic coating for all types of leather upholstery.

Advanced quartz coating specially formulated for automotive leather. Q² LeatherShield is suitable for every type of leather produced to date and does not change the finish of your upholstery. Very easy to apply, only one layer required. Repels dirt and prevents discolouration, protects against liquids and UV rays.

BOX CONTAINS: Q² LEATHERSHIELD / APPLICATOR / 6 SUEDE CLOTHS

AVAILABLE CAPACITIES: 50 ML / 100 ML

PRODUCT PURPOSE: LEATHER



PROTECTS ANY TYPE OF LEATHER

Q² LeatherShield is an advanced, SiO₂ based formula, specially developed for all types of modern automotive leather upholstery. It provides superb protection against dirt, UV rays and the rigours of everyday usage. Q² LeatherShield makes the daily maintenance easy and safe even on delicate upholsteries.



Q² LEATHERCOAT

Easy to use leather sealant.

Q² LeatherCoat is an easy to use, versatile automotive leather protectant. Its resin-based formula makes it the perfect choice for detailing enthusiasts. Q² LeatherCoat may be used on all types of automotive leather and presents the right solution on older, worn upholsteries, where the use of Q² LeatherShield is not recommended. With a durability of up to 3 months, effective protection and dirt repellency exceeds standards set by any regular leather conditioner, protecting the surface from liquids, sweat, dirt or "dye transfer" from clothing.

AVAILABLE CAPACITIES: 120 ML / 400 ML

PRODUCT PURPOSE: LEATHER



MATTE FINISH

As most modern interior automotive leather have a factory matte finish, we made sure that Q² LeatherCoat leaves an invisible layer that does not affect the look or feel of the soft leather trim in any way. It simply coats the leather to ensure its good looks remain the same as the day you bought it.



Q² FABRICCOAT

Very hydrophobic and durable fabric protectant.

Gyeon sets new standards in terms of quartz-based coatings. While developing our product range, we have strived to be as innovative as possible. That led us to the first fully functional textile protectant containing SiO₂.

AVAILABLE CAPACITIES: 120 ML / 400 ML

PRODUCT PURPOSE: FABRICS



SELF-CLEANING

For use on most woven fabrics and textiles, Q² FabricCoat helps keep these surfaces cleaner for longer and also makes them much easier to clean, whether inside or outside your car. This coating is super hydrophobic, 'throwing' water and liquids off fabric and textiles – even for fabric convertible roofs a high pressure rinse once a month can be enough to keep the fabric clean and looking great.



Q² ANTIFOG

No more foggy windows!

Foggy windows and windscreens are annoying and can be dangerous. Q² AntiFog quickly and easily solves this problem, making glass completely clear again and providing perfect visibility. Condensation or 'fog' is mainly caused by dampness in the car, or big temperature differences between the inside and the outside. Q² AntiFog solves these issues in one application that will prevent your windows fogging up again for at least 2 months.

BOX CONTAINS: Q² ANTIFOG / 4 SUEDE APPLICATORS / BLOCK APPLICATOR / SUEDE 20X20 CM

AVAILABLE CAPACITIES: 120 ML

PRODUCT PURPOSE: GLASS



EFFICIENT

A 120 ml bottle of Q² AntiFog will suffice to protect all glass surfaces for more than one winter season in several vehicles. One application for 6 large windows should use a maximum of 20 ml of product.



Q²M PRODUCT COLLECTION MAINTENANCE

A superb Q²M series of advanced maintenance products and accessories, for both amateurs and detailing professionals.

Q²M QUICKDETAILER
Q²M CURE
Q²M CURE MATTE
Q²M WETCOAT
Q²M WETCOAT ESSENCE
Q²M BATHE
Q²M BATHE+
Q²M BATHE ESSENCE
Q²M FOAM

Q²M BUG&GRIME
Q²M IRON
Q²M TAR
Q²M TIRECLEANER
Q²M TIRE EXPRESS
Q²M PREP
Q²M GLASS
Q²M LEATHER MAINTENANCE
Q²M VINYLCLEANER

Q²M PRESERVE
Q²M METALPOLISH
Q²M WATERSPOT
Q²M TOWELWASH
Q²M CLAYLUBE
Q²M CLAYS
Q²M PPF RENEW
Q²M POLISHING SYSTEM
Q²M PADS



Q²M QUICKDETAILER

Easy, slick and very glossy quick detailer for all exterior surfaces of your vehicle.

SLICK AND GLOSSY

Q²M QuickDetailer is the answer to the needs of detailing enthusiasts searching for the most versatile daily quick detailing product. It enhances gloss and adds great slickness while removing spots, streaks or fingerprints. It's completely safe to use on coatings as well as on traditional waxes.



AVAILABLE CAPACITIES: 400 ML / 1000 ML
PRODUCT PURPOSE: PAINT / TRIM / WHEELS



EASY TO USE

Q²M QuickDetailer is the easiest product of its kind, making it a child's play to wipe off even when it dries out on the surface. It may be used both on dry and wet paint as it unfolds its potential as a drying aid. The product is a class on its own when it comes to the slickness of the surface. Its versatile character allows the use on all exterior surfaces.

Q²M CURE

Versatile hydrophobic quartz maintenance spray & sealant.

Q²M Cure has been developed as an innovative, silica-based maintenance spray for ceramic coatings. It prolongs the durability and enhances both gloss and repellency. Regular use allows to gain up to 90% of the regular durability of hydrophobic properties. Q²M Cure proves to be an excellent spray sealant, offering protection even on uncoated surfaces.

—
AVAILABLE CAPACITIES: 100 ML / 250 ML / 400 ML / 1000 ML
PRODUCT PURPOSE: PAINT / TRIM / WHEELS



EFFICIENCY

Efficiency is one of the key features of all Gyeon products, and Q²M Cure seems most illustrative of that. One or two sprays should be enough to cover an entire panel as big as a door with a protective coating. Low consumption translates into great value for the quality of our quartz-based detailer.



Q²M CURE MATTE

Q²M Cure Matte is a unique, silica-based spray sealant designed for matte finished paints. It is both a stand-alone product, providing durable protection and self-cleaning abilities and a spray detailer for ceramic coatings. It increases the depth and intensity of colour without adding any gloss to the finish.

—
AVAILABLE CAPACITIES: 400 ML
PRODUCT PURPOSE: PAINT / TRIM / WHEELS



For the first couple of weeks following application, quartz coatings exhibit an insignificant tendency to develop hard water stain deposits. The use of Q²M Cure Matte immediately after the application of Q² Matte will help eliminate that risk entirely.

Q²M Cure Matte is also a durable spray sealant, usable in both dry and wet mode.

**50%
MORE**
PERFORMANCE
DURABILITY
BEADING



Q²M WETCOAT

Instant hydrophobicity on all surfaces.

Q²M WetCoat is an instant, brilliantly easy to use hydrophobicity booster. It's a ready to use formula, giving outstanding results in a simple and quick spray on/rinse off process. Despite its ease of use, Q²M WetCoat provides great durability and chemical resistance.

—
AVAILABLE CAPACITIES: 500 ML / 1000 ML / 4000 ML
PRODUCT PURPOSE: PAINT / GLASS / TRIM / WHEELS



Q²M WETCOAT ESSENCE

Concentrated version of our ultimate and instant hydrophobicity booster.

Its formula has been specially designed to secure the best possible hydrophobic effect in just one simple step. No matter whether your car has no coating at all or a quartz coating, which has not been refreshed for a long time.

—
AVAILABLE CAPACITIES: 100 ML / 250 ML
PRODUCT PURPOSE: PAINT / GLASS / TRIM / WHEELS



GET TO KNOW ALL OUR SHAMPOOS

Gyeon Quartz developed a range of three outstanding shampoos ready to meet the highest criteria of both enthusiast and professional detailers. They combine the same pH neutral character, safety on all surfaces and finishes with great efficiency. Each of them has different features, Q²M Bathe being the most classic shampoo in the line up with its high foam, Q²M Bathe Essence providing incredible concentration and cleaning power and finally, the awarded Q²M Bathe+ adding instant hydrophobicity thanks to its SiO₂ based formula and three different ways of application.



Q²M BATHE

Slick, concentrated and pH neutral shampoo.

Superb maintenance products for outstanding detailing performance. Like other items in our range of products, Q²M Bathe is superbly efficient thanks to highly concentrated formula. The thick gel is naturally water-soluble, emitting a very pleasant smell, reminiscent of Q²M Cure, as well as producing a long-lasting foam.

—
AVAILABLE CAPACITIES: 400 ML / 1000 ML
PRODUCT PURPOSE: PAINT / TRIM



PH NEUTRAL

Q²M Bathe is a quality pH neutral car wash. It has good cleaning power to dissolve dirt easily, but is gentle enough not to affect coatings or sealants. And because it is pH neutral it also ensures that delicate finishes such as nickel / chrome plated or highly polished elements remain pristine.



Q²M BATHE+

World's first SiO₂ shampoo with instant hydrophobicity.

Q²M Bathe+ is the world's first pH neutral shampoo containing SiO₂. Even a quick wash leaves a strong hydrophobic layer, repelling water, dirt and deferring the need for a next wash. The wash itself is a real joy, while the shampoo is very slick and has a scent characteristic of the whole Gyeon range.

AVAILABLE CAPACITIES: 400 ML / 1000 ML

PRODUCT PURPOSE: PAINT/ TRIM



EASY TO USE

When it comes to all-in-one products, Q²M Bathe+ can be claimed to be revolutionary! Just a quick wash is good for obtaining a marvelous hydrophobic effect and easy maintenance for the next couple of weeks. It is a phenomenal solution for the wintertime, when washing gets harder and the boost in self-cleaning abilities improves the comfort of vehicle maintenance.



Q²M BATHE ESSENCE

The most concentrated shampoo available.

Q²M Bathe Essence is the pure essence of a shampoo. With an amazing concentration of 1:2000, only 5ml of product is enough for a ready-to-use dilution! Even a single, 400ml bottle is enough for 80 washes. Impressive cleaning power and the ability to remove dirt, grime and light organic contamination are combined with fantastic slickness and high foam.

AVAILABLE CAPACITIES: 400 ML / 1000 ML

PRODUCT PURPOSE: PAINT/ TRIM



VERY SLICK

Q²M Bathe Essence has high foam and a large amount of suds. However, the crucial property is its slickness, which greatly contributes to the safety of the wash. Use a high quality wash mitt to collect dirt particles with almost no friction!



Q²M FOAM

The ultimate pre-wash for coated cars.

Pre-washing, especially on cars where a paint correction has been made, is very important to preserve the best possible visual effect for longer. Q²M Foam ensures highly effective first step in the cleansing process, as it helps to decrease the amount of dirt that needs to be removed during the proper, major wash with a mitt and shampoo.

AVAILABLE CAPACITIES: 1000 ML / 4000 ML
PRODUCT PURPOSE: PAINT / TRIM / WHEELS



THICK AND LONG-LASTING FOAM

A thick foam is one of the major benefits of high quality snow foams. Q²M Foam builds up a very thick and deep foam, sticking to dirty areas of the paint and dissolving dirt and grime. The foam should be washed away by a pressure washer before it starts to dry.



Q²M BUG&GRIME

Strong and effective bug and grime remover.

Q²M Bug&Grime is a strong and very efficient pre-wash product developed specially for the removal of insects, bugs and grime. It dissolves contamination and ensures safe and scratch-free wash afterwards. It is the first choice product after every summer evening ride. Q²M Bug&Grime works fast and effective and is coating-safe at the same time.

AVAILABLE CAPACITIES: 400 ML / 1000 ML
PRODUCT PURPOSE: PAINT / GLASS / TRIM / WHEELS



STRONG & READY TO USE

Q²M Bug&Grime can be used as a strong and effective pre-spray during the first steps of a thorough wash. Just leave it on the surface and then rinse it off. At the same time, it's a fantastic aid during a more intensive cleaning process and will remove old and heavily settled dirt while agitated with a gentle brush.



Q²M IRON

Effective iron filling remover.

Q²M Iron is one of the most efficient, fast reacting iron removers on the market. This product was specially developed to decontaminate surfaces from harsh ferrous deposits such as brake dust and rail dust easily, making intensive cleansing simple for both enthusiasts and pro-detailers alike.

—
AVAILABLE CAPACITIES: 500 ML / 1000 ML / 4000 ML
PRODUCT PURPOSE: PAINT / TRIM / WHEELS



Q²M TAR

Speed up the decontamination process safely.

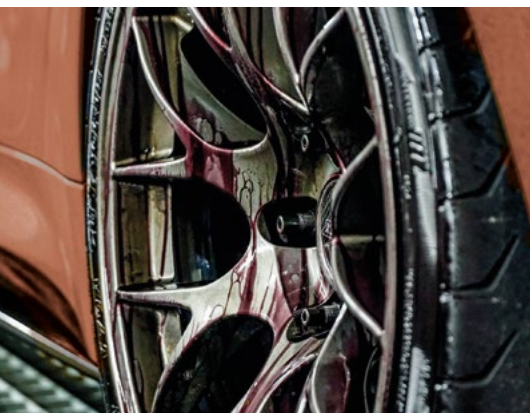
Unlike most tar removers, Q²M Tar does not affect any exterior surfaces and is bodywork safe. It can be used on paint, glass, plastic trim, both painted and unpainted. As it is pH neutral, it can also be used to remove tar spots from bare polished lips.

—
AVAILABLE CAPACITIES: 500 ML / 1000 ML / 4000 ML
PRODUCT PURPOSE: PAINT / TRIM / WHEELS



STRONG COLOUR CHANGING EFFECT

The strong colouring effect of a substance is a very accurate indicator of how much pollution it has accumulated, and of how much work awaits the product. The colouring itself, unlike other manufacturers' products, focused on this function only, in no way translates into the product's performance, though it serves as an illustration to users.



PREVENTS CLAY MARRING

On soft or medium hard paints, even the use of a mild clay may result in marring. As most contamination can be dissolved by combined usage of Q²M Tar and Q²M Iron, this product is also a great help in the maintenance of cars with paint correction done in the past. It allows you to remove pollution, without leaving marring or scratches that otherwise would have to be removed by polishing.

Q²M TIRE CLEANER

Strong and effective tyre and rubber cleaner.

A specialised and highly effective tyre and rubber cleaner. Removes old dressings and deep, accumulated contamination with ease. Q²M TireCleaner is safe on all types of tyres, including classic white-wall rubber.

—
AVAILABLE CAPACITIES: 500 ML / 1000 ML
PRODUCT PURPOSE: WHEELS



EFFECTIVE TYRE AND RUBBER CLEANER

Q²M TireCleaner is a unique formula designed to cleanse all rubber elements of your car. It will soak deep in the porous structure of the material and loosen accumulated dirt and contamination. Q²M TireCleaner dissolves tyre dressings and prepares the surface prior to dressing application.



Q²M TIRE EXPRESS

The quick and easy way to make your tyres look clean and fresh.

Q²M Tire Express is the ultimate tyre & rubber dressing offering fantastic looks matched with a simple, straightforward application. It will restore the “factory fresh” look of the tyre and keep it for many a hundred miles.

—
AVAILABLE CAPACITIES: 400 ML / 1000 ML
PRODUCT PURPOSE: WHEELS



QUICK & EASY TYRE DRESSING

Being water based, it's extremely easy to apply and allows both a dry and wet application. It spreads on the surface very well with just one wipe and doesn't require rubbing into the surface like our SiO₂ infused Q² Tire.



Q²M PREP

Strong, safe and effective pre-coating degreaser.

In contrast to other degreasers available on the market, it not only lifts oily substances and residues of paste or old wax, but is also very capable of solving them, hence their elimination becomes much easier.

—
AVAILABLE CAPACITIES: 500 ML / 1000 ML / 4000 ML

PRODUCT PURPOSE: PAINT / GLASS / TRIM / WHEELS



PERFECT SURFACE PREPARATION

Q²M Prep is a necessary supplement for preparing a vehicle for coating application. It enables elimination of any oily residues, thus creating a smooth, antistatic surface. Q²M Prep has strong cleansing and degreasing properties, making the preparation of the vehicle for any detailing activities much easier and more efficient.



Q²M GLASS

Efficient and streak free glass cleaner.

Q²M Glass is the ultimate formula for fast, effortless and effective cleaning of all automotive glass surfaces. Removes oily residue and instantly leaves a smudge free finish. Easy to use and safe for all interior materials like leather, vinyl or alcantara.

—
AVAILABLE CAPACITIES: 500 ML / 1000 ML

PRODUCT PURPOSE: GLASS



SAFE AND EFFECTIVE

Q²M Glass is safe and effective. Removes dirt, oily residue and even light contamination while not affecting previously applied rain repellents. A gentle aroma boosts the superb qualities of the product.





GYEON LEATHER MAINTENANCE

A complementary series of safe and effective leather maintenance products.

Q²M LEATHERCLEANER MILD

Light, daily leather cleaner for well maintained leather.

Q²M LeatherCleaner Mild is a gentle yet effective pre-coating leather cleaner. Developed along with Gyeon's high-end Q² LeatherShield, it is the ultimate leather preparation product for use before a coating application. It removes light dirt, oily residue and even light discolouration.

—
AVAILABLE CAPACITIES: 500 ML / 1000 ML
PRODUCT PURPOSE: LEATHER



Q²M LEATHERCLEANER STRONG

Strong, effective and safe leather cleaner.

Q²M LeatherCleaner Strong is an efficient and effective pre-coating leather cleaner. It is the ultimate leather cleaning product for use before a coating application. It removes dirt, oily residue, contamination and discolouration.

—
AVAILABLE CAPACITIES: 500 ML / 1000 ML
PRODUCT PURPOSE: LEATHER



Q²M LEATHERSET MILD

Complete leather maintenance set for well maintained leather.

Q²M LeatherSet Mild is the complete solution for your leather maintenance. Combining Q²M LeatherCleaner Mild, a safe yet powerful pre-coating cleaner and Q² LeatherCoat, it becomes the ideal leather maintenance & protection solution.

BOX CONTAINS: Q²M LEATHERCLEANER MILD 200ML / Q² LEATHERCOAT 120ML / Q²M LEATHERBRUSH / Q²M MF APPLICATOR / MICROFIBRE

PRODUCT PURPOSE: LEATHER



Q²M LEATHERSET STRONG

Complete leather maintenance set for used and dirty leather.

Q²M LeatherSet Strong is the complete solution combining Q²M LeatherCleaner Strong, a powerful pre-coating leather cleaner and Q² LeatherCoat to achieve the ideal leather maintenance & protection solution. Q²M LeatherCleaner Strong ensures the removal of deep dirt, oil residue and provides best preparation for coating. Q² LeatherCoat ensures a long lasting matte clean surface and makes future maintenance easier against contamination.

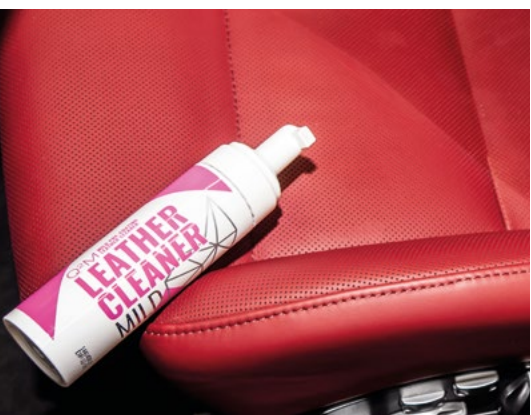
BOX CONTAINS: Q²M LEATHERCLEANER STRONG 200ML / Q² LEATHERCOAT 120ML / Q²M LEATHERBRUSH / Q²M MF APPLICATOR / MICROFIBRE

PRODUCT PURPOSE: LEATHER



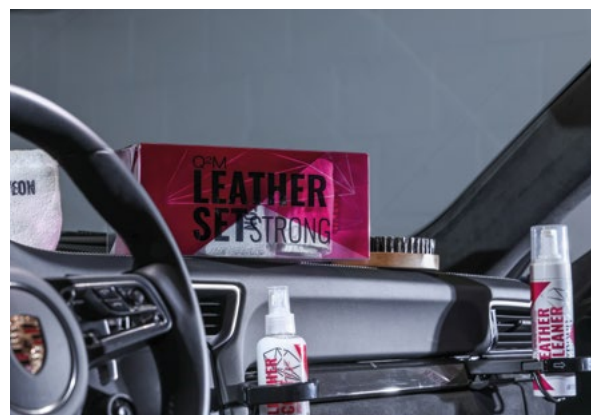
ALL IN ONE BOX

This full set comes with the brand new Q²M LeatherBrush & Q²M MF Applicator as well as a microfibre towel. The new Q²M LeatherCleaner Mild foam dispenser allows more effective and easier application out of the box. Q²M LeatherCleaner Mild ensures the removal of light dirt, oily residue and provides best preparation for coating. Q² LeatherCoat ensures a long lasting protective effect.



STRONG AND EFFECTIVE

Q²M LeatherCleaner Strong is the ultimate solution for cleaning and preparing leather upholstery for application of a quartz coating. It does not contain any softening additives and does not leave any residue that could potentially interfere with a quality coating. Q²M LeatherCleaner Strong leaves a fully matte finish and is suitable for all modern types of leather.



Q²M VINYL CLEANER

Natural matte finish with light anti-static properties.

Q²M VinylCleaner is a gentle maintenance product formulated for regular use. It will not discolour or fade any interior trim. Removes dust and light dirt spots in a flash, leaving no residue behind and preparing the surface for Q²M Preserve.

Q²M VinylCleaner has light anti-static properties, making it a great everyday product for the interior of your car.

AVAILABLE CAPACITIES: 500 ML
PRODUCT PURPOSE: TRIM



Q²M PRESERVE

Restore and preserve all types of interior trim.

Q²M Preserve is a simple and quick way to restore lightly faded trim parts and preserve all others for a long time. Excellent dirt repellency, anti-static properties and UV protection combined in just one product.

AVAILABLE CAPACITIES: 250 ML
PRODUCT PURPOSE: TRIM



CLEANS AND PREPARES ALL TYPES OF TRIM

Q²M VinylCleaner is a gentle vinyl cleaner that might be used on all types of trim, including trim protected with quality dressings. It removes dirt and dust leaving a pleasant matte finish and absolutely no residue behind. Q²M VinylCleaner is the perfect solution for everyday use.



PROTECTS AND CONDITIONS ALL TYPES OF TRIM

Matte is the most desired finish for all interior surfaces and Q²M Preserve offers a very neutral, matte, factory-like finish to all interior trim parts. Q²M Preserve creates an invisible layer that does not affect the look or feel of even the softest vinyl trim in any way. It simply coats the trim to ensure its good looks remain the same as the day you bought it.

Q²M METALPOLISH

Ultimate metal polish with decent cut and a glossy finish.

Q²M MetalPolish is the number one solution when it comes to restoring and polishing metal, aluminium, stainless steel or chrome parts. Highly effective, safe on all surfaces and very easy to use.

—
AVAILABLE CAPACITIES: 120 ML

PRODUCT PURPOSE: TRIM / WHEELS



THE ULTIMATE METAL POLISH

Q²M MetalPolish offers an extremely well balanced combination of high cutting properties with a very good level of gloss and clarity of the finish. When used with machine and a correct pad, it is able to remove sanding marks. It's got everything that's required to create a mirror-like finish.

Q²M WATERSPOT

Strong and effective waterspot remover.

The biggest advantage of Q²M WaterSpot is its safety on paintwork. Due to inappropriate maintenance, water spots may become an issue on fresh coatings. You can remove the most undesirable defects by using Q²M WaterSpot without the need to polish and, in most cases, re-apply the quartz coat.

—
AVAILABLE CAPACITIES: 500 ML / 1000 ML

PRODUCT PURPOSE: PAINT / GLASS / TRIM / WHEELS



Q²M TOWELWASH

Superb microfibre and wool washing aid.

Our experience and laboratory tests have shown that the best results in cleaning and maintaining microfibres are achieved when a 'pure' cleanser is used. No fabric softeners, no fragrance, no colour additives – that is why Q²M TowelWash remains pure.

—
AVAILABLE CAPACITIES: 500 ML

Q²M CLAYLUBE

Concentrated and ultra-slick clay lubricant.

Q²M ClayLube is totally neutral and developed to work with any type and manufacture of clay bars. It does not affect the clay and remains safe for the most delicate bars. At the same time it does not cause any staining on the paint.

—
AVAILABLE CAPACITIES: 500 ML

PRODUCT PURPOSE: PAINT / GLASS / TRIM / WHEELS



DILUTABLE AND EASY TO RINSE

Q²M ClayLube might be diluted up to 1:10 without losing its slickness. It does not leave any stains or hard to remove residue. After the decontamination process comes to an end, just rinse and dry the car.



Q²M CLAY MILD



Q²M CLAY COARSE

—
AVAILABLE SIZE: 100 g

PRODUCT PURPOSE: PAINT / GLASS / TRIM / WHEELS

Q²M CLAYS

The fastest way to remove heavy contamination.

The traditional clay bar remains one of the most effective solutions available for dealing with heavily ingrained dirt on vehicle paintwork.

Q²M Clay Coarse is the fastest way to remove heavy contamination like tar, organic sediments and industrial fallout or overspray. Recommended for use on paintwork prior to a paint correction process, as it may leave slight marring. Designed for advanced enthusiasts and detailing professionals.

Q²M Clay Mild has been designed to be completely safe on all types of paint, effectively removing all types of contamination even on the softest paints. Its light colour helps to spot any removed contamination and kneed the clay bar accordingly.

Both Gyeon clay bars are extremely chemical resistant and may be used with Q²M Iron or Q²M Tar removers, as well as with our highly concentrated Q²M ClayLube.



Q²M PPF RENEW

Innovational paint protection film cleaner, renewer and sealant.

Maintaining paint protection film has never been that easy. Q²M PPF Renew combines light abrasive particles with protective additives, creating resistant and glossy finish.

SLICK & GLOSSY

Even high quality, self healing paint protection film becomes contaminated, dull and changes its initial smoothness over time. Gyeon Q²M PPF Renew brings a remedy to that. With its light abrasive properties, it is able to dramatically improve the level of gloss. The cleaning action of the product allows the removal of bonded contamination deep in the porous structure, restoring the initial slickness and smooth feel of the film.

AVAILABLE CAPACITIES: 120 ML / 1000 ML

PRODUCT PURPOSE: PPF



SiO₂ INFUSED PPF MAINTENANCE

Q²M PPF Renew is the world's first SiO₂ infused paint protection film maintenance product. Containing silica, not only does it restore gloss and slickness, it also does provide UV protection and chemical resistance.



GYEON POLISHING SYSTEM

A complete, technologically advanced and user friendly polishing system.

ALL AVAILABLE CAPACITIES: 120 ML / 1000 ML

PRODUCT PURPOSE: ALL PAINTED SURFACES

Q²M COMPOUND+

A heavy cut compound with lots of power and low secondary defects.

Q²M Compound+ is a heavy cutting paste that delivers an improved level of scratch removal and high abrasion with a low level of dust and limited secondary defects. Although it does leave light holograms, they are simple to remove with one pass of Q²M Polish.



Q²M COMPOUND

A cutting compound with very low dust and a great finish.

Q²M Compound is a cutting paste, delivering excellent performance and a high level of scratch removal combined with a very low level of dust and an incomparable finish. Correct technique combined with an eccentric polisher allows to use Q²M Compound as a one step product!

Q²M POLISH

An effective polish, designed to leave a hologram free finish and deep gloss.

Q²M Polish is an effective polish, designed to leave a hologram free finish and deep gloss. It also has medium cutting power, making it a great product for one-step refreshment.



Q² PRIMER

An ultra-light finish and SiO₂ primer. Superb pre-coating preparation and glossy finish.

Q² Primer is an ultra-light finish and SiO₂ primer. It provides superb pre-coating surface preparation and an incredibly glossy finish. Its main aim is to perfect the finish on the paints which are hardest to work with, dramatically reducing the risk of scratch marks during the final wipe off before coating. Q² Primer leaves a smooth and slick surface, ready to coat.



CONSUMPTION / CUTTING POWER / GLOSSY FINISH



STEP 1 / Q²M COMPOUND+

CONSUMPTION: 15-40ML / PANEL

CUT ██████████+

FINISH ██████████



STEP 1 / Q²M COMPOUND

CONSUMPTION: 15-40ML / PANEL

CUT ██████████

FINISH ██████████



STEP 2 / Q²M POLISH

CONSUMPTION: 10ML / PANEL

CUT ██████████

FINISH ██████████



STEP 3 / Q² PRIMER

CONSUMPTION: 40ML / CAR

CUT ██████████

FINISH ██████████

ADVICE ON APPLICATION

Work with a polishing machine of your choice and the recommended Gyeon polishing pad. Spread at low revs. Work until fully diminished at medium revs. Wipe off with an high quality microfibre cloth. Use a 1:1 dilution of IPA to remove the remaining product and inspect the effect. If needed, re-use.



Q²M PADS

Innovative polishing pads designed for your favourite polishing machine.

—
TYPE: ECCENTRIC / ROTARY

ECCENTRIC PADS: 145 X 20 MM / 80 X 20 MM

ROTARY PADS: 145 X 25 MM / 80 X 25 MM

PRODUCT PURPOSE: ALL PAINTED SURFACES

The GYEON polishing system is a complete solution providing you the necessary pads matching our polishing paste line. The whole line up has been split in 4 grades, each representing one step of the polishing process. Gyeon polishing pads are designed and manufactured with highest attention to detail and multiple individual and innovative solutions.

Gyeon Taylor

Q²M HEAVY CUT

The ultimate heavy cutting pad designed to provide excellent scratch removal with maximum safety.



Q²M CUT

A cutting pad designed to provide excellent scratch removal with maximum safety.



Q²M POLISH

A medium polishing pad designed to provide an excellent depth and reduce secondary defects.



Q²M FINISH

A light finishing pad designed to remove holograms and light defects, providing a high quality finish.



Q²M PRODUCT COLLECTION ACCESSORIES



ACCESSORIES

MITTS

Q²M SMOOTHIE

Q²M SILKMITT

MICROFIBRES

Q²M SOFTDRYER

Q²M WAFFLEDRYER

Q²M SOFTWIPE

Q²M SUEDE

Q²M SILKDRYER

Q²M POLISHWIPE

Q²M BALDWIPE

OTHER ACCESSORIES

Q²M DISPENSERBOTTLE

Q²M LEATHERBRUSH

Q²M MF APPLICATOR

Q²M WHEELBRUSH

Q²M DETAILINGBAG

Q²M SMOOTHIE

Innovational synthetic fibres for a safe wash.

Its main features – safety, softness and comfort – add extended durability due to the innovative type of fibres. Q²M Smoothie glides over the surface collecting dirt particles in the safest possible way. The washing process feels more “lubricated” and smooth. The mitt is equipped with an ergonomic welt protecting it from slipping or falling. It is made of genuine Korean material and custom sewn by Gyeon.

—
AVAILABLE SIZES: 20X30 CM

PRODUCT PURPOSE: PAINT / GLASS / TRIM / WHEELS



Q²M SILKMITT

The perfect solution for drying difficult or low areas on the car.

Gyeon Q²M SilkMitt is the perfect solution for drying those difficult or low areas on the car, and compliments the large Q²M SilkDryer Towel. Containing the same silky-soft but super-tough microfibre material, here in the form of a Mitt with extra absorbent padding inside, the Q²M SilkMitt soaks up large amounts of water.

—
AVAILABLE SIZES: 20X30 CM

PRODUCT PURPOSE: PAINT / GLASS / TRIM / WHEELS





Q²M SOFTDRYER



Q²M WAFFLEDRYER



Q²M SOFTWIPE



Q²M SUEDE

Q²M MICROFIBRES

The safest and most durable edgeless microfibres.

All of our microfibres are developed to suit the products offered. Depending on the surface, Q²M Microfibres are great for applying Q² CanCoat, giving a final wipe down with Q²M Cure or drying your vehicle. All towels provide maximum performance and the highest durability.

PRODUCT PURPOSE: PAINT / GLASS / TRIM / WHEELS / LEATHER / FABRICS



Q²M SILKDRYER



Q²M POLISHWIPE



Q²M BALDWIPE

Q²M LEATHERBRUSH

A fully natural, safe leather brush with an ergonomic handle.

The Q²M LeatherBrush is designed to be as safe and effective as possible on all types of leather. The natural horsehair brush removes dirt effectively from the structure of the upholstery. The ergonomic wooden handle has rounded edges to avoid any damage and provide good grip even while it gets wet



Q²M MF APPLICATOR

Soft and ergonomic microfibre applicators.

The new Q²M MF Applicator has been designed to speed up the coating process and allow perfectly even coverage on all types of large or complex panels. High quality microfibre wrapped around a soft sponge ensures perfect adjustment to the shape of the coated area. The pocket on the top side provides great grip and increases functionality.



Q²M WHEELBRUSH

The ultimate solution for cleaning all of wheels, especially those hard-to-reach places

Q²M WheelBrush is an extremely safe, high quality microfibre brush designed to effectively clean your precious rims without affecting their finish. A gentle, yet effective solution both for enthusiasts and professional detailers. Q²M WheelBrush is made of the same quality fabric as our washing mitt, Q²M Smoothie.



Q²M DISPENSERBOTTLE

A comfortable polishing paste dispenser.

Q²M DispenserBottle is a great aid during polishing, as it's light and comes in a very handy size.

AVAILABLE CAPACITIES: 300 ML



Q²M DETAILINGBAG

Quality bags for your detailing gear.

AVAILABLE SIZES: 26X21X21 CM / 50X22X30 CM



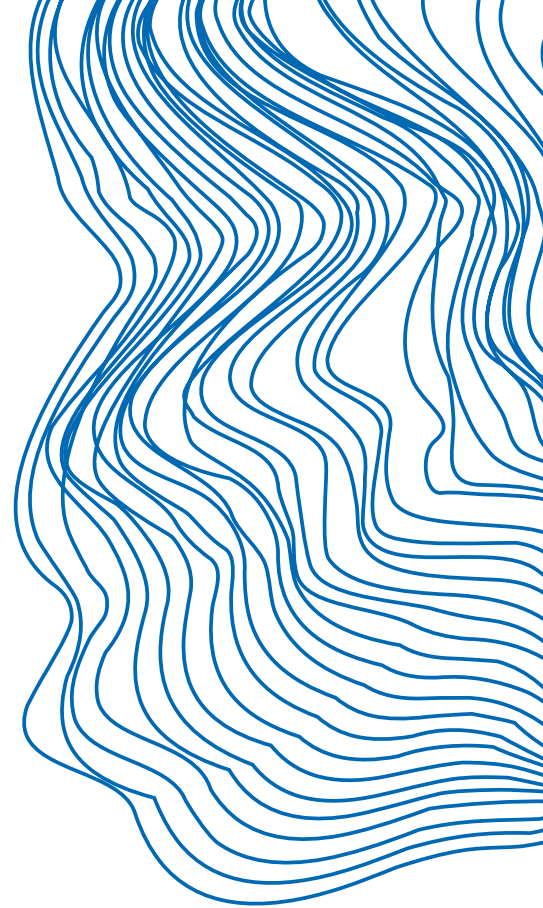


Q²R NEW PRODUCT COLLECTION MARINE

A comprehensive line of innovative marine care products. Clean, maintain and protect your seacraft easily and effectively with sophisticated ceramic formulas.

- Q²R GELCOAT
- Q²R TEAK
- Q²R FABRICCOAT
- Q²R WASH
- Q²R DEGREASE
- Q²R MAINTAIN

- Q²R VINYLCLEANER
- Q²R GLASSCLEANER
- Q²R METALPOLISH
- Q²R MARINEPOLISH STEP 1
- Q²R MARINEPOLISH STEP 2



Q²R GELCOAT

An advanced ceramic coating developed specially for gelcoat and yacht paint.

The ultimate protective ceramic coat for gelcoat and yacht paint. Protects against UV-rays and oxidation. Repels dirt and minimizes stains. Highly water mark resistant. Easy to use 1 layer formula.

BOX CONTAINS: Q²R GELCOAT / Q²M MF APPLICATOR
AVAILABLE CAPACITIES: 100 ML / 200 ML
PRODUCT PURPOSE: GELCOAT



Q²R TEAK

Innovative ceramic coating for marine wood.

Q²R Teak is an innovational ceramic coating specially designed for marine wood. It protects it against chemicals, UV rays and liquids.

BOX CONTAINS: Q²R TEAK / Q²M MF APPLICATOR
AVAILABLE CAPACITIES: 100 ML
PRODUCT PURPOSE: WOOD



Q²R FABRICCOAT

Durable textile protectant.

The first fully functional textile protectant containing SiO₂. Q²R FabricCoat might be used on all exterior and interior fabrics on any seacraft. It will produce durable and strong protection against UV rays, discolouration and dirt.

AVAILABLE CAPACITIES: 1000 ML
PRODUCT PURPOSE: FABRICS



Q²R WASH

Safe and effective boat wash.

Wash your yacht, jet ski or regatta boat safely and effectively. Q²R Wash cleans and removes dirt and residue as well as light organic contamination.

AVAILABLE CAPACITIES: 1000 ML
PRODUCT PURPOSE: GELCOAT / WOOD



Q²R DEGREASE

Pre-coating cleaner and degreaser.

Q²R Degrease has been designed to remove polishing oils and rests of former protection in order to create a smooth and clean surface, ready to receive a new protection.

AVAILABLE CAPACITIES: 1000 ML
PRODUCT PURPOSE: GELCOAT / WOOD



Q²R MAINTAIN

Quartz based yacht maintenance.

Q²R Maintain is a versatile maintenance product for all exterior surfaces, from gelcoat to wood or carbon fibre. Just spray the product on a microfibre, wipe the surface and enjoy a smooth, hydrophobic and streak free finish. The product is perfect to remove dust and fresh water marks.

AVAILABLE CAPACITIES: 1000 ML

PRODUCT PURPOSE: GELCOAT / WOOD / TRIM



Q²R VINYL CLEANER

Plastic and vinyl cleaner for marine applications.

Q²R VinylCleaner is a gentle yet effective maintenance product formulated for regular use. It will not discolour or fade any trim.

AVAILABLE CAPACITIES: 1000 ML

PRODUCT PURPOSE: TRIM



Q²R GLASS CLEANER

Glass and plexi window cleaner.

Q²R GlassCleaner is the ultimate formula for fast, effortless and effective cleaning of all marine glass and plexi surfaces. Removes oily residue and instantly leaves a smudge free finish.

AVAILABLE CAPACITIES: 1000 ML

PRODUCT PURPOSE: GLASS



Q²R METAL POLISH

Metal polish with high cut and a glossy finish.

Q²R MetalPolish is the number one solution when it comes to restoring and polishing metal, aluminium, stainless steel or chrome parts. Highly effective, safe on all surfaces and very easy to use.

AVAILABLE CAPACITIES: 120 ML

PRODUCT PURPOSE: TRIM



Q²R MARINE POLISH S1

Highly abrasive gelcoat and yacht paint polish.

High cutting power for effective defect and oxidation removal.

AVAILABLE CAPACITIES: 1000 ML

PRODUCT PURPOSE: GELCOAT



Q²R MARINE POLISH S2

Finishing gelcoat and yacht paint polish.

Q²R MarinePolish Step2 is an effective polish, designed to leave a hologram free finish.

AVAILABLE CAPACITIES: 1000 ML

PRODUCT PURPOSE: GELCOAT

